



P.O. Box 5759 Walnut Creek, CA 94596
925-933-2627 www.youthhomes.org

CELEBRATING OUR SUCCESS



YOUTH HOMES CHANGING CHILDREN'S LIVES FOR FIFTY YEARS

Please note: For confidentiality purposes, no photographs of current foster children are featured in this brochure unless consent was provided.

Thanks to our generous in-kind donor who made this brochure possible:
Jacqueline Jones Design, LLC www.jacquelinejonesdesign.com

Editorial services and contributions: Kathy Bowles, Beth Goldberg, Leslie Harman, Jenifer Kirtland, Linda Peterson, Audrey Tormey
Printing: GreenerPrinter.com

YOUTH HOMES



OUR MISSION Youth Homes, Inc. provides a safe place for foster youth to heal and grow.

OUR VISION Our vision is a world where former foster kids lead healthy, productive and whole lives.

TO OUR SUPPORTERS AND PARTNERS

My goodness what a year it has been! In 2015, we celebrate 50 years of serving severely traumatized children and this milestone has only been made possible by our community supporters. We strive to acknowledge and honor your kindness by working to improve our services to meet the needs of foster youth and their families.

We continue to grow in a measured and steady pace with our county contracts increasing year over year. It is a reflection of the esteem our county partners place in the work of our skilled and dedicated employees.

In 2014-15, we revamped our workforce development program and quickly saw marked success. Within seven months, 54% of those in the program were employed. We continue to emphasize the importance of education and thanks to the Youth Homes' Auxiliary, in partnership with Alamo Women's Club, 16 college scholarships were awarded. **The clients in our residential and Aftercare Program have achieved an 85% high school graduation rate** and 42% of our transition-age youth are enrolled in college or trade school, far higher than the national statistics for foster youth.

We now have just over 100 staff and have expanded and formalized a comprehensive training program during the onboarding process. The knowledge base for treating traumatized children is expanding rapidly. **Enhanced coordination of our training program** allows our staff to continue to receive continuing education on the latest proven therapeutic approaches as well as take refresher courses on methodologies such as

Nurtured Heart and Pro-Act. The staff's appreciation in our interest in their growth and development was exemplified with **Youth Homes being selected to be one of the "Top 100 Places to Work"** by the Bay Area News Group. It is quite an honor!

Our Board of Directors has continued to grow with each new member bringing an extraordinary background and skill to our management team. In keeping with being a nationally accredited agency, **our Board has paid particular attention to the risk management issues inherent in operating 24-hour residential care.** This is no easy feat. In addition, their leadership and willingness to fully engage in fund development continues to transform our agency in so many positive ways.

Last, but certainly not least, **we finished the year in a financially strong position.** Our endowment is growing as a result of our *Living Legends* — estate and planned giving donors. This will ensure the organization is in operation as long as there are foster youth in our community. With the support of our donors, our Board of Directors, volunteers and staff, we continue to transform the lives of foster youth, all of whom deserve to have a brighter future. *Thank you for your continued belief in our work.*

Sincerely,



Stuart McCullough, *Chief Executive Officer*

“WHEN I WAS IN THE GROUP HOME, WE WANTED TO BE MOVIE STARS AND CELEBRITIES. NOW, I WANT TO GO TO COLLEGE, GET MARRIED, AND HAVE CHILDREN. I JUST WANT A NORMAL LIFE.”

Daniel



THE COMMON THREAD*

You would pass him on the road and not give it a second thought, because Daniel looks like a typical twenty-something in his red and black motorcycle jacket carrying himself with confidence and purpose. Take the time to ask him a question though, and Daniel will articulately describe, well beyond his years, the transformation he has been through. Coming from a home of abuse, drugs, and prostitution, Daniel came to Youth Homes when he was 12 and after multiple placements.

He had a dreary outlook on the foster care system because he felt like a “stack of binders that no one took the time to really get to know.” Reflecting back, Daniel stated, “I just needed a hug. I needed someone to let me talk.”

Daniel first came to Youth Homes’ Crisis Assessment Shelter for 8 months, the longest period of time Daniel spent in one place. He returned to Youth Homes at 18 years old and lived at Cherry Lane, one of Youth Homes’ therapeutic group homes. After transitioning out of Cherry Lane, he informally maintained contact with Jeffrey, a clinical supervisor of our Aftercare Program for transition-age youth. It wasn’t until Daniel was 25 years old that he recognized Youth Homes had provided the most consistent care in his life; a vital thread since the age of 12. After years of contact with Jeffrey, Daniel was ready to formally return and participate in the TAY FSP program, which delivers support services for transition age youth to foster their independence.

Today, Daniel is working two jobs while enrolled at Diablo Valley Junior College where he plans to pursue a degree in accounting. Daniel shared, “When I was in the group home, we wanted to be movie stars and celebrities. Now, I want to go to college, get married, and have children. I just want a normal life.”

**See an actual photograph of Daniel on the inside back cover of this report.*

FINDING INNER STRENGTH

Nicole's father died when she was a child. Her mother re-married a man in jail. As Nicole reports, her mother did not protect her children as she should have. As a result, at 10 years old, Nicole entered the foster care system. By the age of 16, she had been in four group homes and one foster family before coming to Andersen House, Youth Homes' all-girls therapeutic group home in Concord.

Nicole was scared at first about being at Andersen House and admits to having her "ups and downs." But eventually she felt the support of the staff. "They taught me I could do what I put my mind to. I had to believe in myself." While at Andersen, her grades started to improve and she stopped getting into fights at school. She realized she liked school and was a good student.

When Nicole was in a healthy and stable state, one of her goals was to see her mother again, who she hadn't seen since she was 10 years old. With the guidance and support of Crystal, a clinician at Andersen House, the court eventually granted her supervised visits with her mom. Nicole reflects that since being reunited, she has "learned a lot from my mom and about her. People make mistakes. I had to forgive her." Today, they continue to have bi-weekly therapy sessions to work on their relationship.

This young woman is full of spunk and immense insight into the transformation she has been through. "Let the people here help you; that's why they are here. Life gets hard, but you'll get through it if you learn to express yourself to others," advises the 17 year old.

Nicole's next step will be graduating from Andersen House and moving into transitional housing. She will continue to be part of the Youth Homes family through the Aftercare Program which supports transition age youth's path to independence. Her Aftercare clinician will continue to be her cheerleader and advisor as she works towards her goal of attending college and eventually becoming a judge.

"LET THE PEOPLE HERE HELP YOU; THAT'S WHY THEY ARE HERE. LIFE GETS HARD, BUT YOU'LL GET THROUGH IT IF YOU LEARN TO EXPRESS YOURSELF TO OTHERS."

Nicole



THROUGH HARD WORK WITH HER SUPERVISOR AND GRADUAL STEPS TOWARD HOME, JACKIE LEARNED HOW TO CHANGE HER VALUES AND HER PERCEPTION OF WHAT FAMILY LIFE MEANS.

Jackie



REUNIFYING A FAMILY

As a child, Jackie had a difficult time, which often manifested itself through extreme anger. At 13 years old, when she became too much of a safety risk to herself and others, Jackie was placed in Youth Homes' East Bay Shelter, a short-term crisis assessment shelter, to determine what services Jackie needed to help her return home safely. Not only did this shake up Jackie's world, but all of the resources her grandmother had advocated for up to this point came to a screeching halt.

As Jackie's grandmother shared the story of the journey they had been through, she sat beaming with pride because of the hard work both she and Jackie had done to get their relationship to where it is today.

Jackie went through some highs and lows before finding stability at Youth Homes. She began to work with Carrie, a clinical supervisor, on the goal of reunification with her grandmother. Jackie worked remarkably hard on her therapeutic goals over the next few months. During her time with Youth Homes, she was introduced to horse therapy and boxing as a means to manage her anger. Her behavioral improvements led to more frequent and less supervised visits with her grandmother.

Meanwhile, with the help of Carrie, her grandmother rebuilt her entire network of support for Jackie. She knew it was critical to have certain therapeutic services and an individualized education plan in place in order to increase the likelihood of success upon reunification.

After eight months of hard work, Jackie returned home with her grandmother and two younger cousins. Today, they are learning how to function as a renewed family unit and continuing to use the coping skills and resources to maintain a healthy level of functioning.

INSPIRING INDEPENDENCE

After two years and 14 placements in the foster care system, Billy came to Cherry Lane, one of Youth Homes' therapeutic group homes. For the first time at a group home, Billy felt a connection with the staff. "I could tell the staff cared about kids and weren't in it for the money. It's different here."

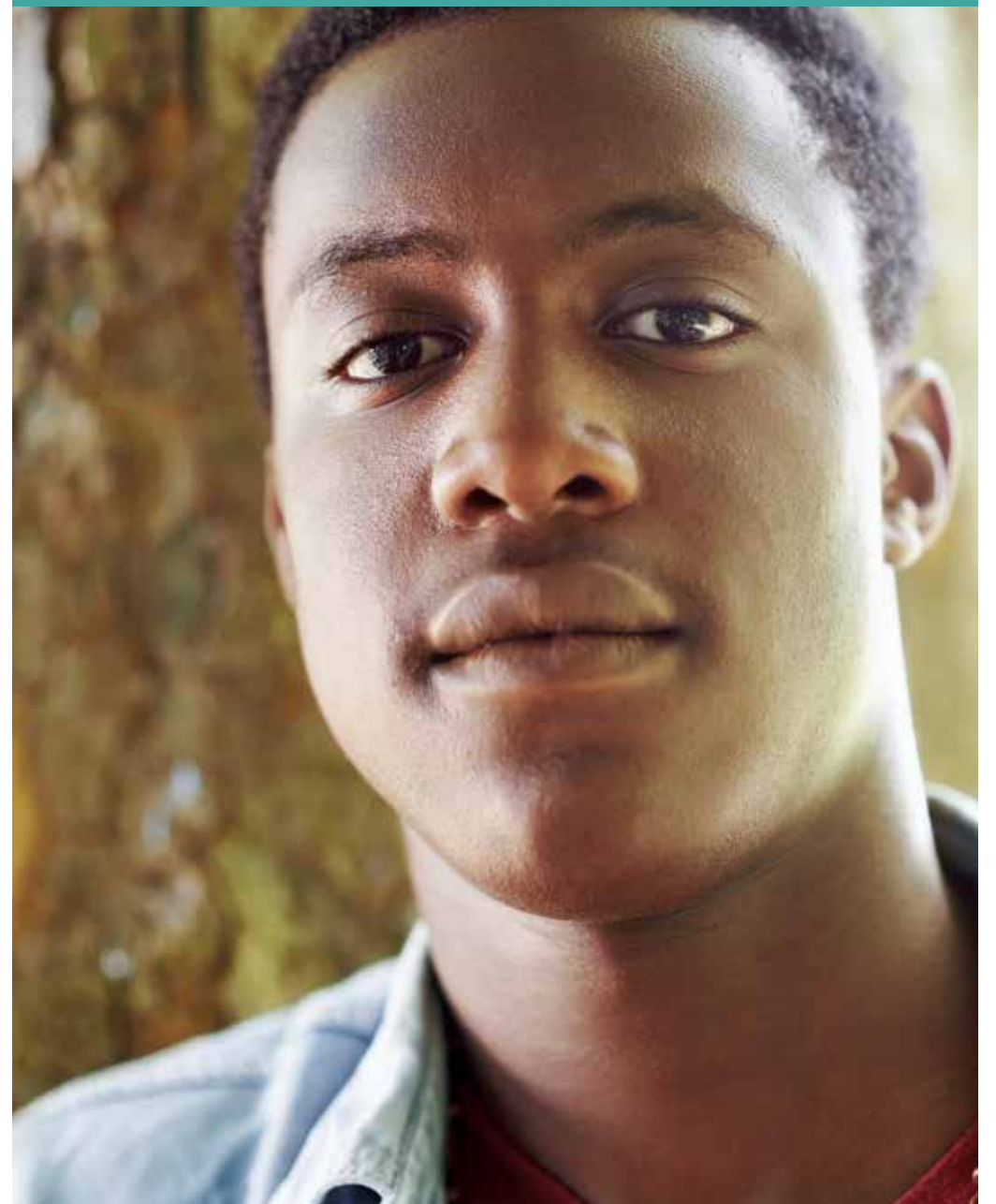
Billy is a driven and persistent young man. He credits landing his job at a local grocery store with going every day. "I just kept on bugging them," he said. After being in the position for less than a year, Billy was promoted and took on additional responsibilities. He recognizes the importance of saving money so he is prepared when he ages out of the foster care system. Billy does not have parents or relatives to fall back on in an emergency. He is focused on his independence and is taking advantage of the support offered by the staff at Cherry Lane as he learns the skills that will ensure his success as an adult. Fortunately, he will continue in Youth Homes Aftercare Program, upon aging out of the foster care system to help the transition to adulthood.

Billy's success has given him a good perspective on foster care and boosted his confidence. When asked what his proudest moment is to-date, he lights up and responds, "When I was invited to go to Sacramento to advocate for foster care youth's rights and I got to meet Senator Jeff Stone. That was cool."

After high school graduation, Billy would like to major in computer science with a minor in political science at a four year college. He plans to enroll in the ROTC program to help fund his college education. With the drive and persistence of this young man, Billy is on track for a bright future.

"WHEN I WAS INVITED TO GO TO SACRAMENTO TO ADVOCATE FOR FOSTER CARE YOUTH'S RIGHTS AND I GOT TO MEET SENATOR JEFF STONE — THAT WAS COOL."

Billy



“HOLDING ON TO ANGER ONLY HOLDS YOU BACK FROM MOVING FORWARD. FORGIVENESS IS A VALUABLE GIFT, NOT JUST FOR OTHERS BUT FOR YOU, TO EMBRACE.”

Nisa



LIMITLESS*

If you witness Nisa performing her spoken word on stage, chills will travel down your spine. It’s a combination of the energy in her delivery and the profound content of her poetry. Through spoken word, Nisa has found a healthy form of expression. She gives her audience a glimpse into her beautiful mind and soul.

Although a child herself, Nisa was forced into the role of being a parent in her home as a result of having a mother with substance abuse issues. When she entered the foster care system at the age of 14 and suddenly had rigid rules placed upon her, she rebelled. She became a client of Youth Homes Therapeutic Behavioral Services when she was a teenager and eventually formed a connection with counselor Shaunte. Shaunte gave her valuable tools to find healthy ways of coping with anger and set boundaries. One tactic Shaunte used was to buy cheap plates and let Nisa throw them against the wall. Looking back on this, Nisa laughs at the exercise but recognizes the symbolism behind it: she was angry about her past and she needed to get it out in order to move on.

Nisa attributes part of her success to the ability to forgive. She has learned that “holding on to anger only holds you back from moving forward. Forgiveness is a valuable gift, not just for others but for you, to embrace.”

Nisa now works as a teaching assistant. She would like to pursue a degree in Sociology and ultimately become a social worker to help kids cope with challenges as she has. And, of course, continue to write poetry.

**See an actual photograph of Nisa on the inside back cover of this report. Limitless is the name of one of Nisa’s most popular spoken word poems.*

YOUTH HOMES 1965-2015

50 YEARS. MANY KIDS. SUCCESS STORIES GALORE. It's Youth Homes' golden anniversary — 50 years of investing in young people, helping them build healthy, successful lives. But even though it's Youth Homes 50th anniversary, we're celebrating the real gold — the promise and potential of the young people we serve. In our 50-year history, we've identified, nurtured, and cultivated the golden opportunities young people deserve. Moment by moment, day by day, year by year, with your help and support — just look at what we've done together.

YOU'VE GOT TO HAVE FRIENDS Relationships make the difference for our young people. It's all about community — whether it's an "all-hands" work day to jump-start a new garden or fundraising to support programs, our partners — local businesses, companies, faith-based groups, and friends from everywhere — provide essential support. Youth Homes supporters are all-in.

4

HOME, SWEET HOME
Home to the power of 4 and counting. Our homes provide safety, security, and opportunity to grow.

11

PROGRAMS
Because different kids have different needs, we have 11 programs to guide each of them toward a better future.

24/7

CARE & CARING
Youth Homes staff is on the case, 24/7, 365 days a year.

DID YOU KNOW? Plant some seeds, an orchard flourishes. Youth Homes opened our first group home in 1965 with \$15,000 in seed money. That "can do" spirit ensures Youth Homes can say "yes" to meeting ongoing and new needs for young people at risk.



Jobs

YOU'RE HIRED!
Sweet words, right? In its first year of operation, 54% of our youth in the Workforce Development program landed a permanent job.

14,000

STEP-BY-STEP
Recovering from trauma and building a healthy life takes time and skill. Youth Homes delivers: 14,000 mental health sessions every year.

LOOK AT YOU! Kids often arrive at Youth Homes with nothing more than a grocery sack of belongings. Step toward success? Clothes (and shoes!) that fit *and* boost their confidence. It's time to shop.



SUCCESS BY THE NUMBERS How do we know the Youth Homes programs work? We measure our success in behavioral changes — from high school or GED completion to first job — through our Continuous Quality Improvement program.

GREEN THUMB How does a garden flourish? Pretty close to how young people flourish — cultivation, the right nutrients, attention. Youth Homes kids internalize those lessons via a summer gardening project. The outcome: Life lesson, practical skills, and a solid work experience for the resume.

110

RECOVERY BY HEART
110 staff members provide the highly-effective social and emotional Nurtured Heart program for our residents.

10-26

THE RECEIVING END
From fourth-graders to young adults, Youth Homes provides continuity and age-appropriate support for our kids.

\$ 450 THOUSAND+

OUR HEROES
Thanks to the generous, ongoing support of the Youth Homes Auxiliary, more than \$300,000 has been invested in programs and services for our kids. From holiday surprises to innovative job-preparation programs, the Auxiliary has been the rock providing stability and continuity for Youth Homes. Auxiliary members, you are our heroes!

celebrate

CAKE! CANDLE!
Your cake, your candle, your celebration. Every kid deserves a joyous birthday — with support from the Auxiliary.

600

OUR FLOCK
It's an extended family at Youth Homes. We serve more than 600 kids and their families each year.

42%

MOVING UP
Not only does YH outperform California public schools in graduation rate, but 42% of our Aftercare clients are in college or vocational school.

TIMELINE

1965
Alan and Joy Young establish Youth Homes after raising funds to open its first group home in Contra Costa County.



...continued
Youth Homes Auxiliary established its own respective 501c3 supporting Youth Homes initiatives.

1967
First and second group home opened caring for unwed mothers and teenage girls referred by the county



1969
Capital campaign launched to raise \$100K. Funds used to burn the home mortgages

1970
Third group home opened for neglected children

1972
Youth Homes partners with Diablo Valley Community College and its Association of Students to open a day care to be a training center for students seeking nursery school assistant certificate of achievement



1973
Four group homes open

1976-81
First formalized program for transition aged youth to help secure employment, housing, and other needs to support their transition

1979
Three more shelters opened



1982-87
Fifteen residential homes in operation

1983
Parenting workshops started as focus shifts to also address families' needs

1993
Andersen House donated by William Andersen, in memory of his late wife Ruth, a county social worker

Cherry Lane opens and houses youth preparing to transition out of foster care



1996
Pryor House, named after former Executive Director Richard Pryor, opens as a result of Youth Homes receiving a contract to become the crisis assessment shelter provider for Contra Costa County



2000
The Mentoring Program launches under the leadership of Board of Directors member, Linda Peterson

2002
Therapeutic Behavioral Program (TBS) established, becoming Youth Homes' first mental health contract

2007
Aftercare Program launched to help transition age youth gain the skills to become healthy and productive adults

2008
Foster Family Agency opens to provide youth a lower level of care with a foster family

East Bay Shelter opens



2010
Organic garden program launched providing Youth Homes foster youth the chance to have their first job

2013
Transition Age Youth Full Service Program (TAY FSP) launched serving foster youth with co-morbidity of mental health and substance abuse issues



2014
Youth Homes receives COA Accreditation. Antioch High School pilot program launched to help foster youth stay on track academically

2015
50 years!

FINANCIALS 2014-2015

Youth Homes continues to expand its programs and serve more children each year. In 2014-15, we launched a pilot program at Antioch High School and reorganized our workforce development program, both quickly showing significant positive impact on the children. Our programs for transition age youth grew as demonstrated by an increase in

the county contracts for services. Our residential homes operated at over 90% capacity year round. Lastly, our clinical outcomes continue to rank far above the national average for foster programs. Fundraising continues to play a critical role in the financial success of the organization and allows Youth Homes to provide optimal services and care for our children.

SUMMARY FINANCIAL REPORT ON OPERATIONS (unaudited)

	2015	2014
Revenue		
Program Income & Gov't Funds	\$6,238,624	\$5,564,880
Contributions (Net)	446,936	491,759
Special Event (Net) Revenue	134,485	121,307
In-Kind Donations	112,821	100,874
<i>Total Operating Revenue</i>	<u>\$6,932,866</u>	<u>\$6,278,820</u>
Expenses		
Programs	\$5,641,494	\$5,075,839
Administrative and General	970,903	1,038,042
Fundraising	239,502	199,373
<i>Total Operating Expenses</i>	<u>\$6,851,899</u>	<u>\$6,313,254</u>
Non-Operating Items		
Non-Operating Income	\$ 3,424	\$ 99,261
Investment Related Income	6,353	35,090
Bequests	10,000	320,189
<i>Total Non-Operating Items</i>	<u>\$ 19,777</u>	<u>\$ 454,540</u>
Net Surplus (Unrestricted)	\$ 100,744	\$ 420,106
Change in Temp Restricted	25,619	28,680
Change in Perm Restricted	(22,359)	13,682
Total Change in Net Assets	<u>\$ 104,004</u>	<u>\$ 462,468</u>

BOARD OF DIRECTORS

OFFICERS

Kathy Bowles
President
Retired Development Officer

Alan Bonny
Vice President
Strategic Account Executive,
BMC Software

Kang Lim
Secretary/Treasurer
Attorney at Law,
Law Office of Kang S. Lim

MEMBERS

Sandra Abram
Retired School Employee

Ann Appert
Director of Resource
Allocation & Planning,
WestEd

Jan Berckefeldt
Executive Director,
Maybeck Foundation

Tom Blanks
Retired Special Education
Credentialed Teacher
Vice President,
Mt. Diablo Teachers
Association

Elizabeth Chapple
Director of Operations,
Pleasant Hill Coin
& Jewelry Exchange

Pat Collins
Vice President,
Senior Business
Relationship Manager,
Bank of the West

Arturo Gonazlez
Assistant Vice President of
Community Banking,
Wells Fargo Bank

Edith "Edie" Henchey
*Youth Homes Auxiliary
President*
Retired Qantas Airways
Customer Relations and
Standards Manager

Jeff Johnson
Senior Partner,
Corporate Finance
Associates

Jenifer Kirtland
Retired Managing Director,
EVC Group

June Krug
Retired School Principal

Stanley L. Maleski
Retired School District Business
Official and
Peace Corps Country Director

Tim McCreery
CEO & Founder,
Savvius, Inc.

Stuart McCullough
*Chief Executive Officer,
Youth Homes, Inc.*

Valerie Ridgers
Retired Director,
Boy Scouts of America

EXECUTIVE LEADERSHIP

Stuart McCullough
Chief Executive Officer

Linda Callahan
Clinical Director

Kim Chilvers
Program Director

Beth Goldberg
Director of Development

Audrey Tormey
Human Resources Director

Shaina Van Pelt
*Project Manager of IT and
Accreditation*

"It has been an honor to be a part of Youth Homes for the last ten years; dedicated staff, volunteers and community partners — working together so foster children can reach their fullest potential. Youth Homes raises the bar — operating with the highest integrity and transparency, while working diligently to continually learn, grow and provide treatment through the use of nationally recognized best practices."

— Kathy Bowles, *Board President*

COMMUNITY SUPPORT

THANK YOU

We gratefully recognize our donors who gave in the fiscal year 2015. Thank you for your generosity to the foster youth in our care.

The following list reflects all gifts and pledges received between July 1, 2014 and June 30, 2015.

Youth Homes is establishing an endowment to ensure long term financial stability for the care of foster youth. All gifts from our Living Legends Program (see page 27) are earmarked for the endowment. A gift to the endowment fund will last in perpetuity.

PRESIDENT'S CIRCLE

\$75,000 - \$100,000
Libby and Tom Edwards

PRESIDENT'S CABINET

\$50,000 - \$74,999
Youth Homes Auxiliary

PRESIDENT'S COUNCIL

\$25,000 - \$49,999
The Dean and Margaret Leshar Foundation
Thomas J. Long Foundation
The Morris Stulsaft Foundation

CIRCLE OF HOPE

\$10,000 - \$24,999
Ann and Peter Appert
Cathy Barber
California State Assembly, Joan Buchanan
CO TUA Marie Cruess Crut
Firedoll Foundation
Gemmer Foundation
Barbara Barron and Mark Hanna
Mary and Bradley Lockwood Trust
Patricia and Timothy McCreery

GUARDIAN ANGELS

\$5,000 - \$9,999
AT&T California
Kathy and Rick Bowles
Knights Of Columbus
Pacific Service Credit Union
Minoo Sultan and Bert Payne
Pleasant Hill Coin & Jewelry
Alice Robertson
Kim and Hank Stern
Janet and Gottfried Tittiger

HONORARY COACHES

\$2,500 - \$4,999
Bowles and Verna LLP
The Mary Ellen Browning Memorial Trust
Debra Coggins and John Kikuchi
Marion Gizzi
Jennifer and TJ Grossi
Susan and Richard Hare Family Foundation
Lauren and Daniel Hlebakos
Jenifer and Grayson Kirtland
June Krug
Cariann and Kang Lim
Maximus Foundation

“The opportunity and challenges to help make a difference in the lives of the children we care for never gets old. I am truly grateful for the opportunities that Youth Homes has provided for me.”

— Donna Heimbruch, *employee of 26 years, Residential Supervisor of Andersen House*

Barbara and Stuart McCullough
Microsoft Matching Gifts Program
Leslie and Gary Miller
Pacific Gas and Electric Company
Leigh Robinson
Leigh Salvo
San Ramon Valley High School
St. Stephen's Episcopal Church
Robin and Charles Studebaker
Umpqua Bank
Melody Howe Weintraub and Jerry Weintraub

DINNER TABLE DONORS

\$1,000 - \$2,499
1515 Restaurant and Lounge
Sandra Abram
Susan Alonso
Ascension Benefits & Insurance Solutions
Jean and Paul Barnhart
Nancy Bennett
Jan Berckefeldt
Caroline and Alan Bonny
Gerrie and Dick Boucher
Elizabeth Bowles
Suzanne and Kent Buckles
Burton Valley Elementary
Chevron Employee Matching Gift Program
Nancy Claybaugh
Clayton Valley/Concord Sunrise Rotary
Lia and Mario DeTomasi
Diablo Valley Reporting Services
Sandy and John Donatoni
Sinh Du
East Bay Independent Insurance Agents Association
Marilyn and Dirk Fitzgerald
Gianni's Italian Bistro
Arlene and Alan Gould
Edith Henchey
Heritage Bank Of Commerce
Laura Hoffman
Rhonda and Brad Holsworth
Mina and Mojee Janatpour
Teresa Jerner
Glo and Jeff Johnson
Lafayette Chamber of Commerce
Lafayette Community Foundation
James and Tori Lawrence
Janet and Stanley Maleski
Connie Marks
Susan and Tom McNeil
Mechanics Bank
Million Dollar Round Table Foundation
Oakcare Medical Group
R&D Commercial Properties
Jeanne Rasmussen

Sonjia and Gregory Redmond
Margaret Tunnell and John Reed
Linda Theuriet and Paul Remack
Valerie and Paul Ridgers
Rotary Club Of Pleasant Hill
Lesley and Ralph Salo
San Francisco Forty Niners Foundation
San Ramon Valley United Methodist Church
Thalia and Robert Siegel
Janice and Byron Smith
St. Perpetua Church
Virginia and Tom Steuber
Diane and Hal Steuber
Corry Stork
Bie Tan
Tapestry
Stephenie and Dan Teichman
Paul Remack and Linda Theuriet
John Reed and Margaret Tunnell
Sharon and Rod Uffindell
Carol Walsh
Tat Welcome
Wells Fargo
Lona and Ronald Wyatt

FAMILY ROOM FRIENDS

\$500 - \$999
Heidi and Richard Alef
Kristen and Ron Altbaum
Betsy and Jon Andron
Barney & Barney Foundation
Percenia and Michael Beasley
The Benevity Community Impact Fund
DeeDee and Charles Blankley
Kathleen and Bob Burke
Burr Pilger Mayer LLP
Ann and Nick Carlin
Elizabeth and Chris Chapple
Le and Rod Chu
Vanessa and Jesse Crews
Deutscher Properties
Distribution Publications
Leila Douglass
Janice Foster
Glenn Foster
Sue and Bill Fulcher
James Horan and Jonee Grasse
Bill Glenn and Scott Hafner
Judy Hirabayashi
Marilyn and William Hoenig
Kathy and Mark Lefanowicz
Isabelle (I.V.) Lindskoog
Marjorie Livingston
Sharon and James Moore
Tom and Carol Morehouse

COMMUNITY SUPPORT

Jerry S. Mosher
Karen and Tom Mulvaney
Orinda Community Church
Orinda Woman's Club
Kris and Steve Palsa
Carla Pancheco
Martha and Randal Pendleton
Pension Dynamics Company, LLC
Linda and Ken Peterson
Ruth Reeves
Samuel Renwick
Sally and Greg Rhodes
William and Martha Slavin
Janice Spampinato
Elaine and Greg Wanket
Dara Youngdale and Steve Lovell
Peter Zolintakis and Renee Breber

GOOD FRIENDS

\$1 - \$499

Anonymous Members (4)
Carlene and Steve Abbors
Lindsey and Bob Adams
Edna Alarcon
Zoe Alexander
Fredrica and Orin Allen
Megan Andrews
Sharon and Carl Anduri
Anonymous Donor
Janet and Mike Appel
Brandi Askin
Craig Atwood
Ruth Bailey
Anne and Christopher Baker
Beth and John Baker
Ruth Barcelon
Lawrence Bautista
Jody and George Benkly
Sandra and Bruce Beyaert
Colleen and Craig Bissell
Richard Bittner
Victoria Bjerke
Pat Peterson and Jean Blankenship
Anne and John Bone
Phyllis and Jodi Borden
Hal Bornstein
Louise Bourassa and Peter Linfoot
Holly and William Brand
Ann Hardy Bratland
Josephine Brown
Ron and Sharon Brown
Phyllis Browne
Ginny and Richard Bruzzone
Helen and Bill Budde
Jennifer and Jeff Budke

Clarita and Steve Buich
Carol and James Bunn
Fran and Philippe Bureau
Veronica Burke
Sonya Bynum
John Canepa
Eleanor Canova-Davis
Tom and Linda Carman
Jameela Carney
Teresa Carson
Pam L. Caruso
Cindy Chan and David Rico
Ruby and Arthur Chen
Agnes Chen
Mark H Chien
Victoria Chin
Traci and Ray Chu
Olga and Stephen Clark
Barbara and Bill Clark
Classic Vans, Inc.
Tracy Clinton
Annabelle Cloner
The Clorox Company
Patty Battersby and Jim Cunha
The Colonial Barber Shop & Style Shop
Leanne and Michael Colvin
Donna and Ned Comar
Judy Conde
Contra Costa Parents Of Multiples
Marsha and Joe Conwill
Edith Copenhaver
Dr. and Mrs. Kevin Coppersmith
Rosemary and Douglas Corbin
Mark Cordingabrams
James and Sue Cosenza
Charles Couch
Jacqueline Crawford
Christine and Robert Crecelius
Myrna and John Cruikshank
Kerry and Phillip Curran
Faith and Robert Cushman
Beth Darrow
Marie Davis
Lara Delaney
Deloitte Financial Consulting
Bobbie DeReuter
Cheryl Hines and Chuck Deutschman
Diablo Valley Lions Club
Terri and Ryan Donohue
Gary Carter and Suzanne Dudeck
Amy Duling
Bill Durkin
East Bay Community Foundation
Ron Elvidge
Bernice Ely
Clayton H. Englar

“In 1965, community members identified a critical need for at-risk children and the Auxiliary was conceived. Providing funds for foster children enables them to enjoy real life experiences and amenities so they may blend and compete while they heal and grow.”

— Edith Henchey, *President of the Youth Homes Auxiliary*

Ann Etherington
Celestine and Dave Evans
Teresa Everett
Lynda and Theodores Fahlen
Patricia and Roger Falcone
Robert Pelham and Becket Feierbach
Joanne Filippini
Peggy and Keith Fleming
Carol Frank
Sharon Fries
Virginia and George Fries
Kym and Stephen Frieztsche
Jim Gemmer
Heather and Brian Gemmer
Teresa and Michael Geringer
Jeanne Gianakos
Carol and Chuck Glass
Solange and Michael Gold
Beth and Roger Goldberg
Eleanor Goldstein-Erickson
Christina and Arturo Gonzalez
Vicki and Scott Gordon
Gordon & Rees, LLP
Sylvia Gott
Kody Kerwin and Gillian Graham
Patricia and Richard Grame
Andrew Gregor
Janine and John Grenham
Barbara Hanscome
Betty Hardinson
Leslie and Chris Harman
Dean & Mary Ann Harper
Barbara and Stanley Heimowitz
Dwight Jaffee and Lynne Heinrich
Susan Helms
Joanne and Mario Hernandez
Penelope Hickey
Ira Hillyer
Joy Hirayama
Chris Hoffmann
Barbara Holloway
Nancy and Roger Howsmon
Rondi and David Hurlbut
Sandi and Dell Hutchinson
Carol and Richard Hyman
Rita Iorfida
Henry Irby, Jr.
Heather Irwin
Margaret and Craig Isaacs
Nedda Janatpour
Dorothy Jelly
Lowrey Jones
Elizabeth Jones
Sydney Kapchan
Catherine and Alan Kaye
Gary and Carol Kefer

Janet and James Kennedy
Pam Kinder
Elizabeth King-Sloan
Kristine Kinnear
Kathleen and Sam Kirk
Judy and Roy Kirkpatrick
Annette Knox
Lynn Eve Komaromi
Mary and Anthony Kraitz
Kristin Krueger
Ed Krug
John Krug
Jenna Lampson
Sue and John Latchford
Cindy and Bob Latham
Marilyn and Bryan Lawver
Elaine and Vince Lazo
Lynne and Robert Leach
Dong Lee
Jason Leffingwell
Elizabeth Lemkul
Diane and Victor Leventhal
Jill Levine
Dr. and Mrs. Sheldon Lewis
Barbara and Gary Lewis
Wendy Lichtman
Kathleen and Patrick Lickiss
Ken and Jayne Lindberg
Mary Lovill
Sharon Luebke
Joel Luebke
Linda Luzar
Lisa and Alan Mac
Elly MacKay
James Mackey
Macy's East - Campaign
Kathy and Dick Marshall
Sheri Mascorro
Steve Matlin
Marilyn Matosian
Jackie Matsumura
Kathleen McAdam
Laura Lee McConnell
Ken and Juanita McCreery
Anne Hollander and Roger McCreery
John McDonald
Jennifer McDougall
Geri McLaughlin
Lorna and Patrick McLaughlin
Delores McLaurin
Paula Meader
Michelle Mehlhorn
Emory Menefee
Dolores Merritt
Pat and Frank Mighetto
Charles and Margaret Miglia

COMMUNITY SUPPORT

Edward Miller
Vic and Marilyn Miller
Patricia Mills
Cameron Mitchell
Kathy Moore
Sandra Moriarty
Morgan Stanley Smith Barney
Maridel and John Moulton
Arlene Mueller
Sandy Muhlhauser
Barbara Nash
Cynthia and Oscar Neal
Beth Needel
R. Peter Johnson and Susan Marie Neyer
Marilyn and William Nichols
Kay C. Nicholson
Suzie and Dan Noal
Michael Nolan
Patty and Bill Northlich
Gene and Helen Oliver
Shelly and Brian O'Neill
Lucy Oneto
Teresa and John Onoda
Ruben Orellana
Ragen and Wayne Ortland
Rebecca and Kevin Osman
John Oster
Marissa and Bruce Paltenghi
Grace and Jerome Paolini
Jeanne and Harry Parham
Cecilia Parisi
Edwin Parrish
Preston Maring and Phyllis Peacock
Emily Pelayo-Yuson
Deanne Perkinson
Janice and Richard Peterson
Peter Petrucci
Margaret and Nathan Pettit
Ruth and Charlie Pettler
Ruth Peyton
David Pfeifer
Anne Pieper
Richard Whitmore and Jasinta Pister
Jimmy and Sandra Poole
Donna Preece
Diane K Pruet
Dave and Sharon Ramos
Beth Ransom
Alison and Brian Reed
Elizabeth Reeves
Julie Reid
Shirley and Steve Rexrode
Joan Richards
Lucille Richey
Susan and Bob Ripley
Francie Roberts

Alton and Kathleen Robinson
Pam and Nick Robinson
Rita and Anthony Robinson
Nancy Rockwell
Darlene and Ron Rodrigues
Deborah and Alfred Roessler
Barbara and Dick Rogan
Georgene and John Rostkowski
Kathryn and Harvey Rudman
Suzanne J. Salter
Megan Samartzis
Antonio Sanchez
Lillian Johnston-Scarborough
John Scharer
Lee Scher
Christina Schiavello
Sue Schiffer
Nancy and Craig Schlatter
Roger Schmidt
Jean Schubel
Al Schue
Jody and Martin Schultz
Jane Scott
Shining Star Consulting
Georgina Smith
Joan Sorensen
Ann B. Spaulding
Joan Spiegel
Elisabeth Stark
Anna-Rose Stebbins
Barbara and James Stedman
Andy Krakoff and Jeannie Sternberg
Patrick Stevens
Nancy and Roy Stotts
Karin and Mark Stryker
Mary P. Sullivan
Connie and Ron Susa
Jean Tajima
Fran and Stan Taylor
Karen Teel
Margaret and Mike Teeter
Mary Terjeson
Ann Thelwell
Janet and Ramsay Thomas
Claudine Thomas
Kari and Alan Thompson
Pam and Bill Thurston
Tice Valley United Methodist Women
Sandra and Richard Tietjen
Felipe Toledo
Stephen Tollefson
Bettie Tomchalk
Barbara and Ed Tonningsen
Patty and Brian Topkis
Audrey and Don Tormey
Jessica Nguyen and Phil Tran

“One of our fondest memories was hosting a dozen kids and staff to a holiday outing in San Francisco. But, supporting Youth Homes has been deeply meaningful, regardless of whether we meet the children. We know that because of the staff, children may someday create their own wonderful experiences with their own families.”

— Mark Hanna and Barbara Barron, *Donors*

Kathy and Cal Tucker
Turning Point Asset Management
James R. Tysell, M.D.
UBS Community Affairs & Corporate Responsibility, Americas
UPS
Michelle Vargas
Selene Vasquez
Marilyn Voland
Tiffany Walker
Jill and Bill Wallace
Frances and Stephen Wallace
Freda and Leonard Warren
Yolanda Washington
Anne Webster
Suzanne Weeks
Wendy Wells
Wells Fargo Home Mortgage
David Wendt
David White
Elizabeth and Robert Williams
Jean E. Wilson
Ann Richardson and Daniel Winokur
Sandra Wolfe
Brenda and Victor Wong
Tiffany and Kevin Wong
Pang and Garrin Wong
Mary-Jane Wood
Kathleen and Gary Woodworth
Buck and Elizabeth Worthing
Susan Wright
Elizabeth and Clayton Wright
Janelle and Ron Wyatt
Dr. and Mrs. John Yee
Annette Yoshino
Gabriela and Alejandro Zavala
Denise Zetterbaum
Julie Ziemann

Every effort has been made to ensure the accuracy of this listing. Please direct any questions or concerns to Leslie Harman, Fund Development Associate, at 925-949-5489 or leslieh@youthhomes.org.

IN KIND GIFTS

1515 Restaurant and Lounge
18 Rabbits
Alaska Airlines
Maria Alexander
Alexandra Amur
Art Visions Portraiture
Asian Art Museum
AstraZeneca Pharmaceuticals
Bacigalupi Vineyards
Cathy Barber

Barney & Barney
Bay Area Discovery Museum
Bedford Gallery
Jan Berckefeldt
Berkeley Repertory Theatre
Bevmo!
Black Angus
Black Oak Casino
Blackhawk Auto Museum
Caroline and Alan Bonny
Adrianna Borris
Kathy and Rick Bowles
Judy and Bill Brennan
Bridges Restaurant
Broadway Plaza
Peter Torrise and Melissa Brosnan-Torrise
Al and Betty Browning
Burr Pilger Mayer LLP
Burton Valley Elementary School
Peggy and Bob Cabaniss
California Performances
California Symphony
Cartoon Art Museum
Castro Village Bowl
Chabot Space & Science Center
Elizabeth and Chris Chapple
Cheesecake Factory
Cherubini Coffee House
Child & Family Services Matrix
John Fox and Kim Chilvers
Linda Christenson
Olga and Stephen Clark
Contra Costa County Bar Juvenile Law
Costco
Country Waffles
Mary Suilmann and Rick Crispino
Kevin and Autumn Cronin
Crooked Vine Stonyridge Winery
Dante Robere Vineyards
Danville Bakery
Jen Delaplane
Diablo Foods
Diablo Magazine
Diablo Rock Gym
Disneyland
Distribution Publications
Ted Dobbs
Terri and Ryan Donohue
East Bay Independent Insurance Agents Association
Libby and Tom Edwards
El Charro Mexican Dining
Encore Gym
Epic Insurance
Esin Restaurant & Bar
Julie and Doug Ewert
Fine Arts Museum of San Francisco

COMMUNITY SUPPORT

First Community Bank
 Peggy and Keith Fleming
 George Flynn
 The Fontes Family
 Forbes Mill Steakhouse
 Forma Gym
 Frank Family Vineyards
 Frankie, Johnny & Luigi Too!
 Marilyn and Basil Friedman
 Todd Friedman
 Lydia Gali
 Sybil Gibbons
 Gilroy Gardens Family Theme Park
 Nancy Glenfield
 Go Car Tours San Francisco
 Christina and Arturo Gonzalez
 Mary and Mark Grigsby
 Guadalajara Grill
 Habitot Museum
 Hafner Vineyard
 Stephanie Hall
 Barbara Barron and Mark Hanna
 Happy Hollow Park & Zoo
 Leslie and Chris Harman
 HC Financial Advisors
 Edith Henchey
 Lorna Henri
 Herb Lamb Vineyards
 Lauren and Daniel Hlebakos
 Hotel Healdsburg
 Humana
 Barbara and Bill Ingraham
 Jacqueline Jones Design
 Heather and Gabriel Jacquez
 Michelle Jajeh
 Patti James
 JetBlue Airlines
 Glo and Jeff Johnson
 Joan and Scott Jones
 Katrina Rozelle Pastries and Desserts
 Kaur Photography
 Jenifer and Grayson Kirtland
 Thommen Korah
 June Krug
 La Mediterranee
 Lawrence Hall of Science
 Lazy Dog Café
 Le Gateau Elegant
 Left Coast Marketing
 Lions Club Of Danville
 Virginia Ludwig
 Linda Luzar
 Mandarin Oriental San Francisco
 Minoo's Aesthetic
 Marine's Memorial Association
 Markham Vineyards

Maureen Lobo and Tim Martin
 Nico Martinsen
 Addie Mattox
 Cory McCann
 Lois McCleary
 Patricia and Timothy McCreery
 Barbara and Stuart McCullough
 McDaniels BBQ & Catering
 Leslie and Gary Miller
 Minuteman Press Lafayette
 Mt. Diablo Unified School District
 Victoria Nakamura
 Napa Valley Wine Train
 Kathleen and Walter Nelson
 Cindy Nigro
 Nothing Bundt Cakes
 Oakland A's
 Oakland East Bay Symphony
 Oakland Zoo
 Oakwood Athletic Club
 Pat O'Meara
 Oregon Shakespeare Festival
 Pacific Coast Brewing Company
 Pacific Service Credit Union
 Joanne Pappas
 Peju Province Winery
 Laurel Pendleton
 Piatti Restaurant
 Pier 39
 Nola Proll
 Diane K Pruett
 Raymond Winery
 Renaissance Club Sport
 Republic Services
 Valerie and Paul Ridgers
 Robert Half
 Rock Wall Winery
 Darlene and Ron Rodrigues
 Marialyce Romeo
 Bernice Russ
 Russian River Adventures
 Safeway
 San Francisco Opera Box Office
 San Jose Sharks
 SF Ballet Ticket Services
 SF Mixology
 Sky High Sports
 SMUIN Ballet
 Snoopy's Home Ice
 Sonoma Raceway
 Southwest Airlines
 St. George Spirit's
 St. Mark's Lutheran Church
 Laura Stark
 Harriet Stearns
 Barrett Lindsay Steiner

“Becoming Living Legends provided me and my husband the opportunity of bequeathing a gift to Youth Homes; a gift that would not otherwise be possible in our annual giving. We like to think that in some small way we may have made a difference in the lives of foster youth.”

— Valerie Ridgers, Board Member and Living Legend

Sugar Bowl Corporation
 Sunrise Bistro & Catering
 SusieCakes
 Andrea Sutherland
 Tina Tankka
 TECHsperience
 Terri Patterson
 Tesla Motors Walnut Creek
 The Bach Group
 The Contemporary Jewish Museum
 The George “A Kimpton Hotel”
 The Golden Skate
 The Laurel Inn
 The Phoenician, A Luxury Collection Resort
 The Walt Disney Family Museum
 TheatreWorks Silicon Valley
 Together We Raise!
 Tommy's Jojnt
 Jean and Pete Torrey
 Kathy and Cal Tucker
 Shaina Van Pelt
 VML Winery
 Jimmy Wadwa
 Carol Walsh
 Nina Wang-Cukor
 Debbie and Fred Warren
 David Wendt
 What's Mine is Yours
 Amanda Wheeler
 Winchester Mystery House
 Janet Wisecarver
 William Wong
 Rita Wustner
 Yankee Pier

DONATIONS MADE IN HONOR OF:

Kathy Bowles
 Rick and Kathy Bowles
 Helen Bunn
 California
 Elizabeth Chapple
 John Donatoni
 Janice Foster
 Shirley Fulcher
 The Garden Program
 Scott Hafner
 Edward Hayes
 Jim Hoffman
 June Krug
 Tim McCreery
 Stuart McCullough
 Sue Miller
 Karen Mulvaney
 Linda Peterson

Ken and Linda Peterson
 Olivia Rico
 Ivy Robinson
 Nick Robinson
 Angelo Eric Spampinato
 Anna-rose Stebbins
 Barbara Marsh-Wetherall
 Beverly White H
 Lona and Ronald Wyatt

DONATIONS MADE IN MEMORY OF:

Hedayat Abedi
 Percy Abram Sr.
 Michael Benkly
 Molly Bennett
 Burton Colan
 Nan Darrow
 Shirley Fulcher
 Adam Granata
 Shawn Marie Hart
 Walter S. Hirt
 Frances B. Ketterer
 Sue Kibby
 Adam Maleski
 Lorna H. Martyn
 Molly McCambridge
 Jim Richardson
 Ivy Robinson
 Sam Sarkissian
 Mary Strawser
 Joanne Taylor
 Lorene Williamson
 Bob Wilson
 Murray Winthrop

LIVING LEGENDS MEMBERS

Living Legends are friends who have included Youth Homes, Inc. in their estate plans or have established a planned gift. The foresight is a testament of their commitment to improve the lives of foster youth.

Anonymous Members (3)
 Richard Bittner
 Kathleen and Richard Bowles
 Peggy and Keith Fleming
 Edith Henchey
 Corinne I. Marks
 Lorna H. Martyn
 Stuart and Barbara McCullough
 Leslie and Gary Miller
 Valerie and Paul Ridgers
 Ivy and Leigh Robinson
 Joanne Taylor
 Catherine Welcome

THE NEXT 50 YEARS

Looking forward there is much change in the foster care system on the horizon; it is being completely redesigned under the rubric of the Continuing Care Reform. Legislation is underway to implement sweeping change in how the foster care system is structured. To be part of the new system, foster care agencies will have to be nationally accredited, have on-site intensive mental health services, be short term in their treatment designs and must have an intensive follow-up capability built into their continuum of care. Youth Homes has been re-designing our treatment system for the past five years in order to be compatible with this long overdue redesign of the foster care system. We will be fully prepared to implement the change when this reform takes place.

Why? Because we have had the resources, we have been able to conceptualize, implement and continuously improve our programs and be flexible and responsive to the changes occurring in the treatment of foster care.

We are humbled by your steadfast support over all these years. We are a strong, competitive and successful nonprofit corporation, prepared to march into the future, come what may — because of each and every one of you.

In our next 50 years, we will be sure that foster children leaving the system have a permanent place to live and continuity of care and support services so they may have a brighter and productive adulthood.

The story behind the story:

Daniel requested that we show an actual photograph of him (right) as well as his real name and story in this year's annual report. Read Daniel's story, The Common Thread, on page 5.



DANIEL



NISA

The story behind the story:

Nisa granted Youth Homes permission to use her real name, actual photograph (left), and her success story in our publications. Read Nisa's story, Limitless, on page 13.